



## DAMEN STAN TUG® 1606 "A.M.S. ORION"

### GENERAL

YARD NUMBER	503150
DELIVERY DATE	February 2011
BASIC FUNCTIONS	Towing, mooring and pushing operations
CLASSIFICATION	Bureau Veritas 1 ✕ Hull • MACH TUG Coastal Area incl. tonnage certificate
FLAG	Australia
OWNER	Australia Marine Services (A.M.S. Tugs & Barges), Australia-Perth WA

### DIMENSIONS

LENGTH O.A.	16.56 m
BEAM O.A.	5.54 m
DEPTH AT SIDES	2.54 m
DRAUGHT AFT	2.21 m
DISPLACEMENT	90 ton

### TANK CAPACITIES

FUEL OIL	14.2 m <sup>3</sup>
FRESH WATER	1.1 m <sup>3</sup>
SEWAGE	0.7 m <sup>3</sup>
BILGE WATER/SLUDGE	0.5 m <sup>3</sup>

### PERFORMANCES

BOLLARD PULL AHEAD	15.0 ton(m)
SPEED	10.5 knots

### PROPULSION SYSTEM

MAIN ENGINES	2x Caterpillar C18 TA / B
TOTAL POWER	894 bkW (1216 bhp) at 1800 rpm
GEARBOXES	2x Reintjes WAF 264L 4.5:1
PROPELLERS	2x Kaplan II fixed pitch propellers
NOZZLES	2x 1350 mm Van de Giessen "Optima" with st.st. innerrings
RUDDERS	2x streamlined, double plates
STEERING GEAR	Powered hydraulic 2x 45°, with rudder indicator

### AUXILIARY EQUIPMENT

GENERATOR SET	Caterpillar C2.2 NA, 230 V, 20.3 kVA, 50 Hz
ALTERNATOR 24 V	2x main engine driven
BATTERY SETS	2x 24 V 200 Ah + change over facility
ALARM SYSTEM	Engines, gearboxes, bilge alarm + w.t. door
BILGE/GS PUMP	Elec. driven, Sterling SIHI VWSI 5013, 15 m <sup>3</sup> /hr
FUEL OIL SYSTEM	Duplex filters, water separators + SOS valve
COOLING SYSTEM	Closed cooling system
WATER SYSTEM	Electrically driven freshwater hydrophore and sewage pump
FRESH WATER HEATER	230 V, 30 liter
VENTILATION	Mechanical ventilation in E.R. 10.500 m <sup>3</sup>

### DECK LAY-OUT

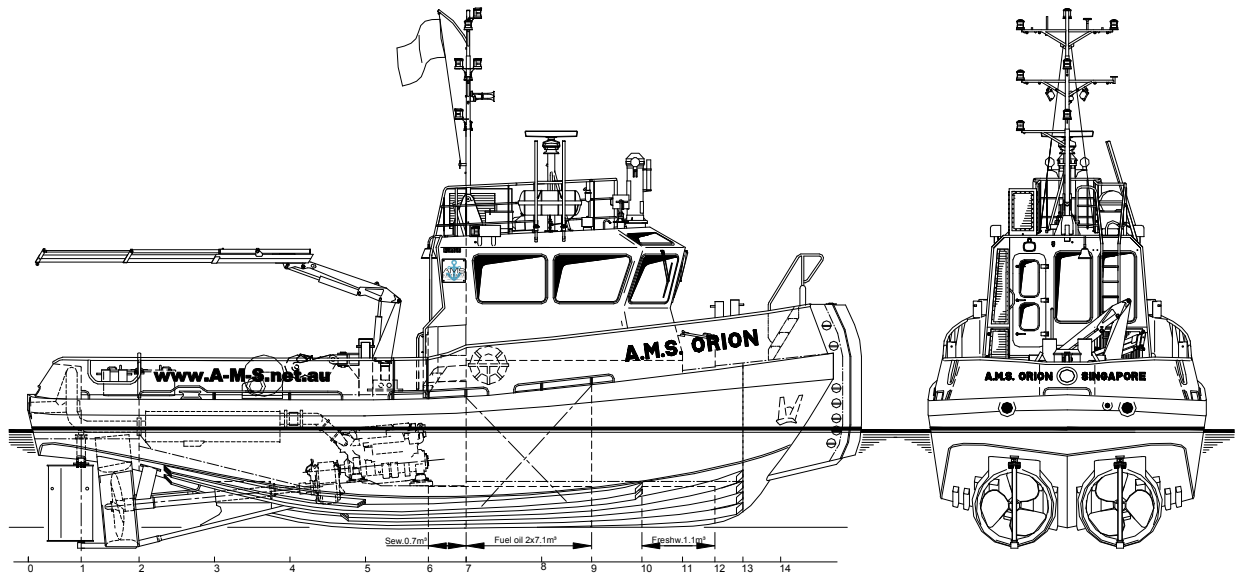
ANCHORS	2x 80 kg Pool (HHP)
CHAIN (TOT.)	100 m shortlink chain 13 mm diameter
ANCHOR WINCH	manual for one anchor
CRANE	Heila HLM 3-2S, 0.5 ton at 6.9 meter
TOWING HOOK	Mampaey disc type, 25 ton
PUSH BOW	Cylindrical rubber fender Ø 380 mm
LIFERAFT	On top deck for 6 persons

### ACCOMMODATION

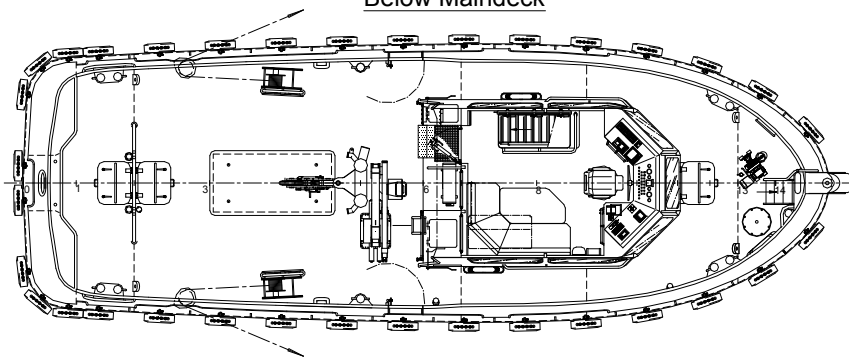
The air-conditioned accommodation is completely insulated and finished with durable modern linings, floating floor and acoustical Dampa ceiling in the accommodation and wheelhouse. The air-conditioned wheelhouse is fitted with a corner settee with table and a control position. Below deck four berths, a galley and sanitary facilities are provided. Windows are fitted in aluminum frames.

### NAUTICAL AND COMMUNICATION EQUIPMENT

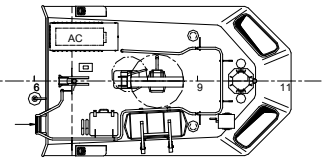
SEARCHLIGHT	Pesch 250 W + floodlight 150 W
HORN	Electric
RADAR	Furuno FR 8062
COMPASS	Magnetic Kottter type
GPS	Furuno GP-32
ECHOSOUNDER	Furuno LS-6100
VHF RADIO	Sailor RT2048



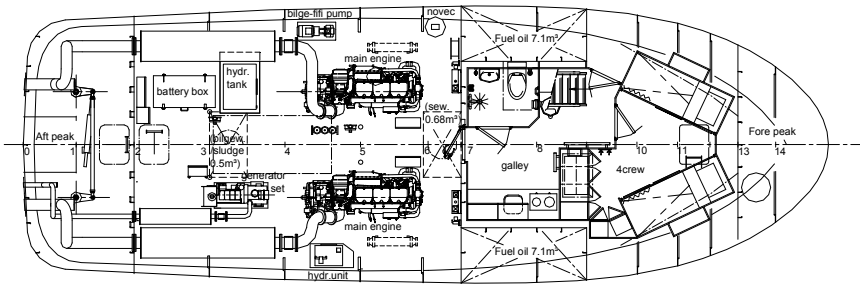
Below Maindeck



Topdeck



Maindeck



# DAMEN STAN TUG<sup>®</sup> 1606

"A.M.S. ORION"

**DAMEN**

DAMEN SHIPYARDS GORINCHEM

Member of the DAMEN SHIPYARDS GROUP



Industrieterrein Avelingen West 20  
4202 MS Gorinchem

P.O. Box 1  
4200 AA Gorinchem  
The Netherlands

phone +31 (0)183 63 99 11  
fax +31 (0)183 63 21 89

info@damen.nl  
www.damen.nl